

Evaluation of National Strategies, Example from Denmark

Christian Nøhr

Department of Development and Planning
Virtual Centre for Health Informatics
Aalborg University
Denmark
cn@plan.aau.dk

The Danish health care sector

- Population 5.4 million
- HC expenditures:
 - 8.5% of GNP
 - 3,000 US \$ pr. inhab./year
 - Funded by taxes
- Private GPs:
 - Gatekeepers
 - Service for fee (public)
- Hospitals:
 - < 60 hospitals
 - Almost all public (97 %)
 - Owned & run by 5 regions
- Long term & home care:
 - Run by 98 municipalities



No shortage of status reports

-EC bench-Mark -2007
 medcom
 -Tele-medicin
 SUNDHEDS OBSERVATORIET
 -2010 Jan - Feb - Mar - Apr - May - Jun - Jul - Aug - Sep - Okt - Nov - Dec - 2011
 Dagens Medicin
 -Status
 Hospital
 Vision
 AALBORG UNIVERSITY

No shortage of reports

EC bench-Mark -2007
 SUNDHEDS OBSERVATORIET
 Eds
 -2010 Jan - Feb - Mar
 v - Dec - 2011
 Dagens Medicin
 Vision
 UNIVERSITY

Monitoring of clinicians use of, and attitudes to IT

Physicians and nurses invited to participate (n=8350)

Response rate: 28%

2312 Responses => 1377 MDs, 935 RN

Not fully representative

Different motives for participating

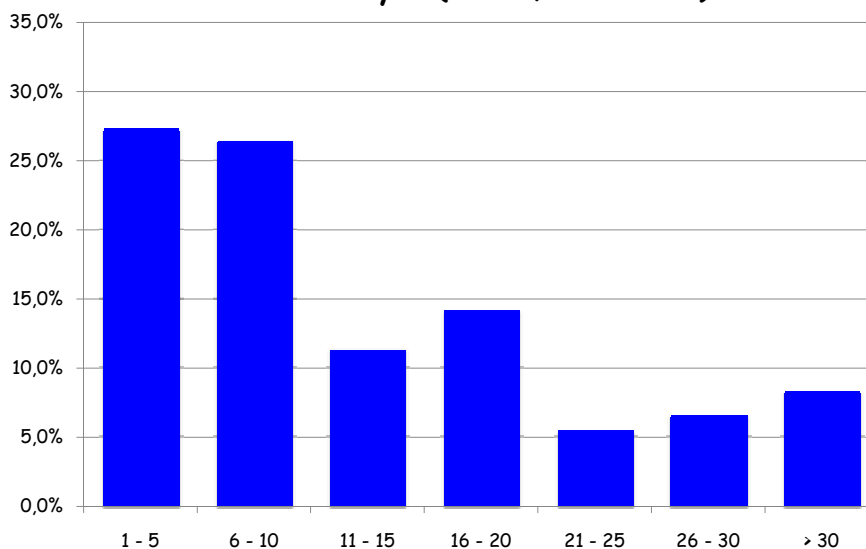
Distribution of professional areas equal to national figures

Distribution of responses from regions proportional to number of inhabitants

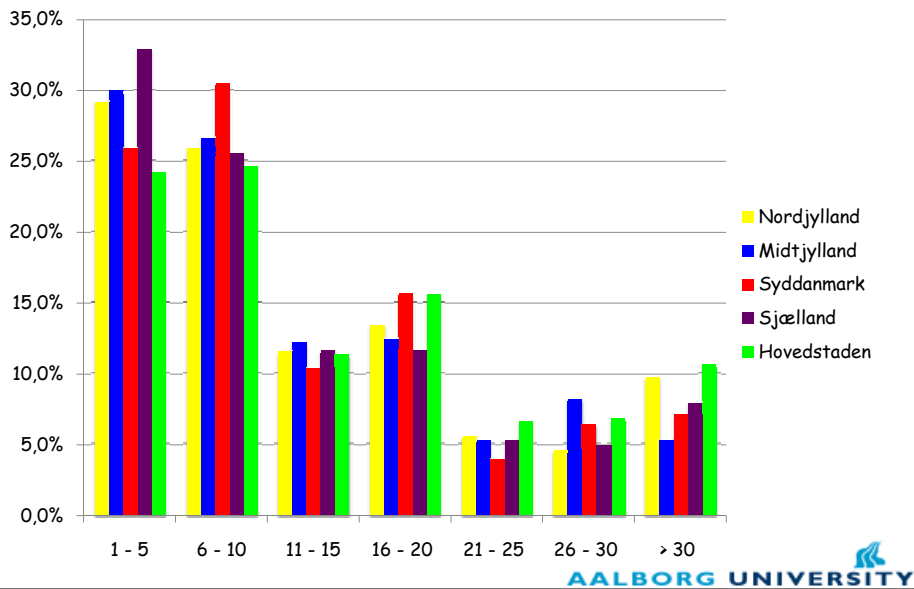
Gender distribution:

- Male: 36 %
- Female: 64 %

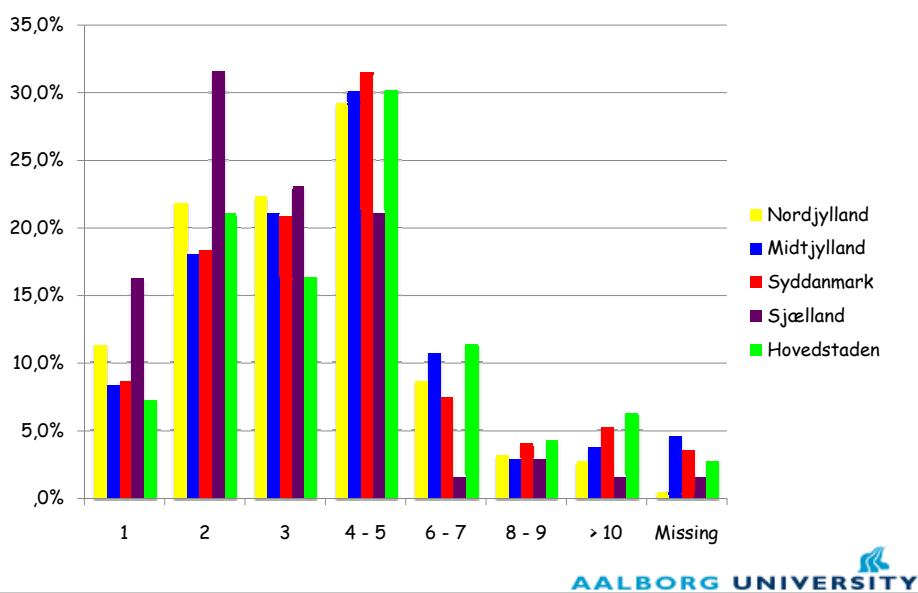
How many times do you log in to a system on a normal workday? (in %, n=2219)



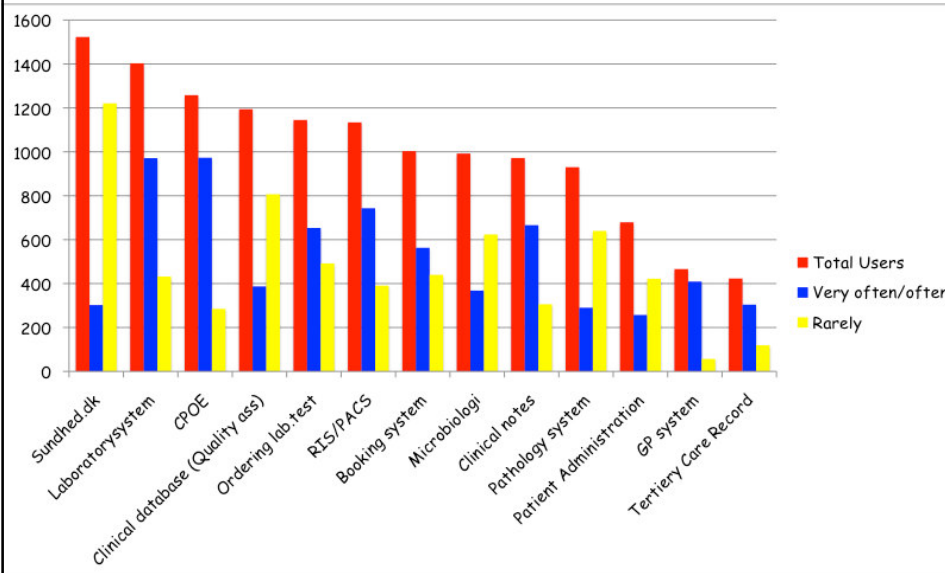
How many times do you log in to a system on a normal workday? (in %, n=2219)



How many usernames and passwords do you use every day ?



Number of users of the different health information systems, and how often they are used (n=1797)



What information would you like to share with other clinicians?

