

Evaluation of National Strategies, Example from Denmark

Christian Nøhr

Department of Development and Planning
Virtual Centre for Health Informatics
Aalborg University
Denmark
cn@plan.aau.dk

The Danish health care sector

- Population 5.4 million
- HC expenditures:
 - 8.5% of GNP
 - 3,000 US \$ pr. inhab./year
 - Funded by taxes
- Private GPs:
 - Gatekeepers
 - Service for fee (public)
- Hospitals:
 - < 60 hospitals
 - Almost all public (97 %)
 - Owned & run by 5 regions
- Long term & home care:
 - Run by 98 municipalities



No shortage of status reports

A horizontal timeline arrow pointing from left to right, labeled with months from Jan to Dec for the years 2010 and 2011. Above the arrow, several report covers are displayed: an EC benchmark report from 2007, a report from medcom, a report from Tele-medicin, and the E-Sundheds Observatorium logo. Below the arrow, more report covers are shown, including one from Dagens Medicin, one from Digital Hospital, and one from Vision. The Aalborg University logo is in the bottom right corner.

A detailed view of the E-Sundheds Observatorium logo, featuring a large green 'E' and a globe icon. The text 'SUNDHEDS OBSERVATORIUM' is in blue and green. A timeline arrow is shown below the logo, with labels for '2010 Jan - Feb - Mar' and 'v - Dec - 2011'. Report covers from the timeline are visible on the left and right sides. The University logo is in the bottom right corner.

Monitoring of clinicians use of, and attitudes to IT

Physicians and nurses invited to participate (n=8350)

Response rate: 28%

2312 Responses => 1377 MDs, 935 RN

Not fully representative

Different motives for participating

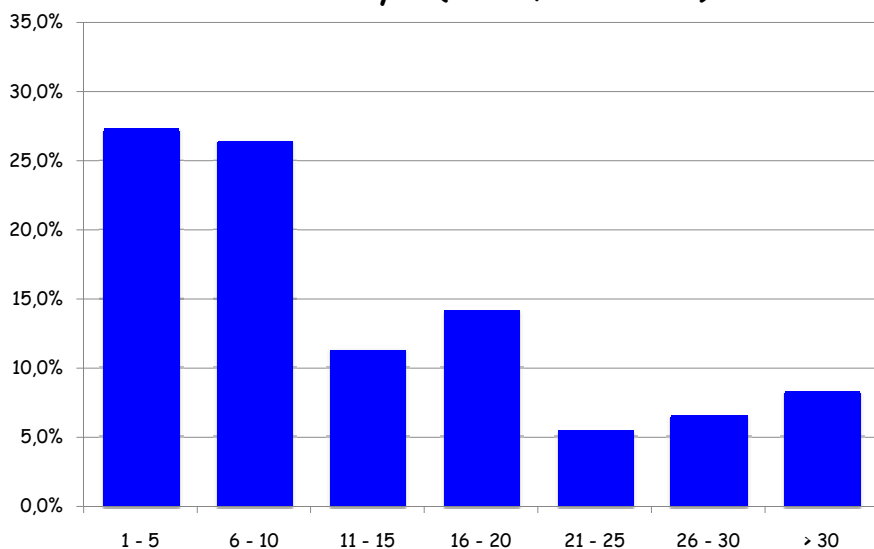
Distribution of professional areas equal to national figures

Distribution of responses from regions proportional to number of inhabitants

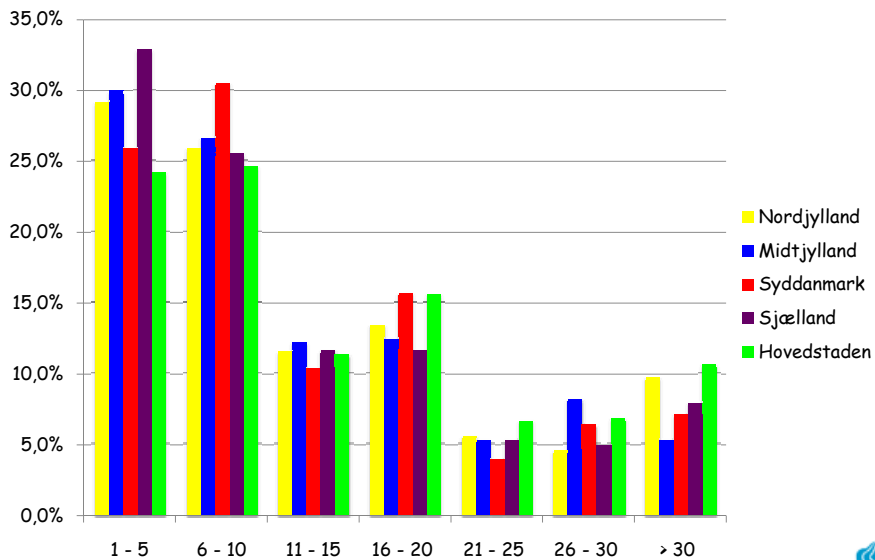
Gender distribution:

- Male: 36 %
- Female: 64 %

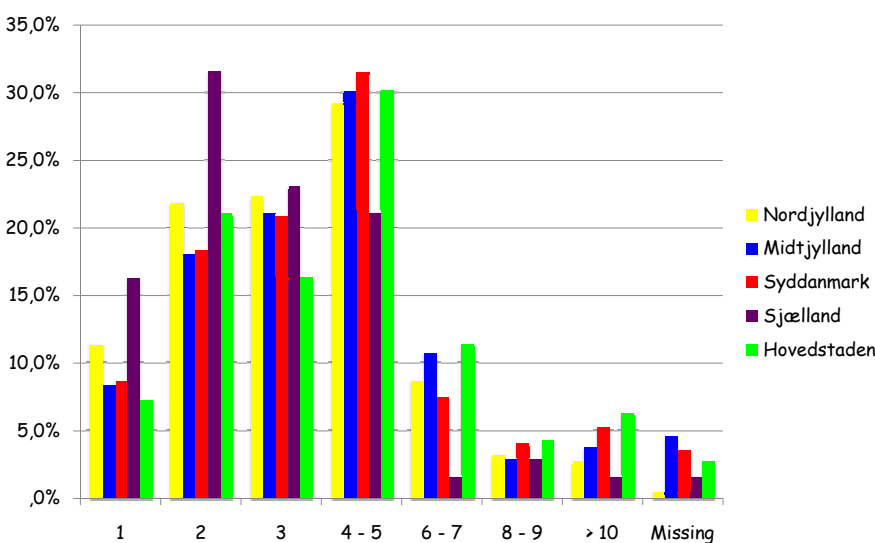
How many times do you log in to a system on a normal workday? (in %, n=2219)



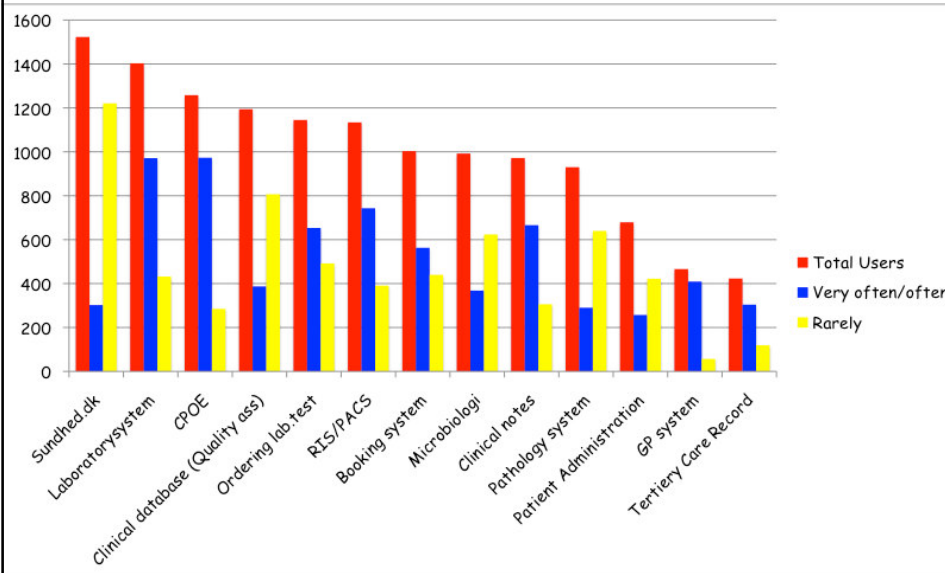
How many times do you log in to a system on a normal workday? (in %, n=2219)



How many usernames and passwords do you use every day ?



Number of users of the different health information systems, and how often they are used (n=1797)



What information would you like to share with other clinicians?

